



eTurboWare

For MS-DOS

User's Guide



Part No: M3-000006, Ver:1.1

The information in this document is subject to change without notice. No part of this document may be reproduced or transmitted in any form or by any means, electronic or mechanical, for any purpose, without the express written permission of eTurboTouch Technology, Inc. eTurboTouch may have patents or pending patent applications, trademarks, copyrights, or other intellectual property rights covering subject matter in this document. The furnishing of this document does not give you license to these patents, trademarks, copyrights, or other intellectual property except as expressly provided in any written license agreement from eTurboTouch.

The information provided in this document is intended as a guide only. For the latest detailed engineering specifications, please contact your eTurboTouch Systems Application Engineer. eTurboTouch Technology is committed to continually improving product designs, as a result, product specifications may be subject to change without notification.

Copyright

©2003-04 eTurboTouch Technology, Inc. All rights reserved.

Trademark

eTurboTouch, the eTurboTouch logo, are registered trademarks of eTurboTouch Technology Incorporated. Microsoft and Windows are registered trademarks of Microsoft Corporation.

2003/11/12

Part No: M3-000006

Version: 1.1

History of Modification:

Date	Description
11/12/2003	Change eTurboTouch Chinese name.

Contents

1. Preface	5
<i>Introduction.....</i>	<i>5</i>
<i>Installation.....</i>	<i>6</i>
<i>Support Services.....</i>	<i>6</i>
2. Using eTurboWare.....	7
<i>Using eTurboWare.....</i>	<i>7</i>
<i>File Menu.....</i>	<i>8</i>
<i>Calibrating Your Screen.....</i>	<i>9</i>
<i>2-Point Calibration.....</i>	<i>9</i>
<i>5-Point Calibration.....</i>	<i>10</i>
<i>25-Point Calibration</i>	<i>11</i>
<i>Draw Test Window</i>	<i>13</i>
<i>Terminal Window.....</i>	<i>13</i>
<i>Touch Setting.....</i>	<i>14</i>
<i>Mouse Mode.....</i>	<i>14</i>
<i>Mouse Mode Parameter</i>	<i>16</i>
<i>eTurboWare Mouse Icon.....</i>	<i>16</i>
<i>On-Line Help</i>	<i>16</i>
<i>Exiting the eTurboWare.....</i>	<i>17</i>
3. Troubleshooting	18
<i>Important Notice</i>	<i>18</i>

1. Preface

The eTurboTouch touch panel is the most intuitive pointing device available for the PC series of computers and monitors. Touch panels make using computers as simple as touching the screen. It is ideal for a variety of applications, including entertainment, training systems, information, point-of-sale, factory automation, laboratory and medical instrumentation, interactive selling demonstrations, educational programs and so on.

To use the Touch panel with your host computer or device, you have to install controller, the touch panel and the corresponding software. For the instruction of installing touch panel, refer to *Sensor Kit Installation Guide*. For the hardware connections for your controller, please refer to the *Controller reference guide*.

Introduction

eTurboWare converts the data from the touch panel to emulate input from a mouse device. eTurboWare for DOS is the software for the eTurboTouch touch panel. It provides full touch panel functionality for all applications running under DOS environment.

After you finished installing eTurboWare, you can select and drag objects using the touch panel. To make a selection, simply touch the screen slightly.

This manual provides the following information and will be described later by chapters.

- Install this software
- Use the touch panel (control panel) to customize your work environment
- Troubleshooting

⋯ Important: Before installing software, you must complete the appropriate hardware connections for your controller and touch panel.

Installation

To install the eTurboWare for DOS, please follow the steps below:

1. Insert the eTurboWare CD into your CD-ROM drive.
2. Change from C drive onto the drive of your CD-ROM.
3. Type in "Install". The installation procedure starts. Please wait for a moment for installing the appropriate files from the CD to your hard disk.

When you installed a brand-new controller, you have to do 2-point calibration first before using. Please use mouse or keyboard to finish the work.

Support Services

eTurboTouch provides technical support to help you solving the problem that you might encounter. Before you contact to our service center, please write down,

- The type of the sensor that you have
- The version of the driver
- The firmware version for the controller
- Description of the problem briefly

Preparing the above information can save the time to help you solving the problem. You can contact to us by giving a phone call, sending a fax, or electronic mail.

Tel: 886-3-4547599

Fax: 886-3-4547555

Website: www.eturbotouch.com

E-mail Address: service@eturbotouch.com

2. *Using eTurboWare*

You can change the software settings for your system, such as changing the calibration methods, touch modes, cursor options, hardware, and diagnostic tools to suit your preferences.

To make sure you can invoke command with a touch, two steps listed below should be done.

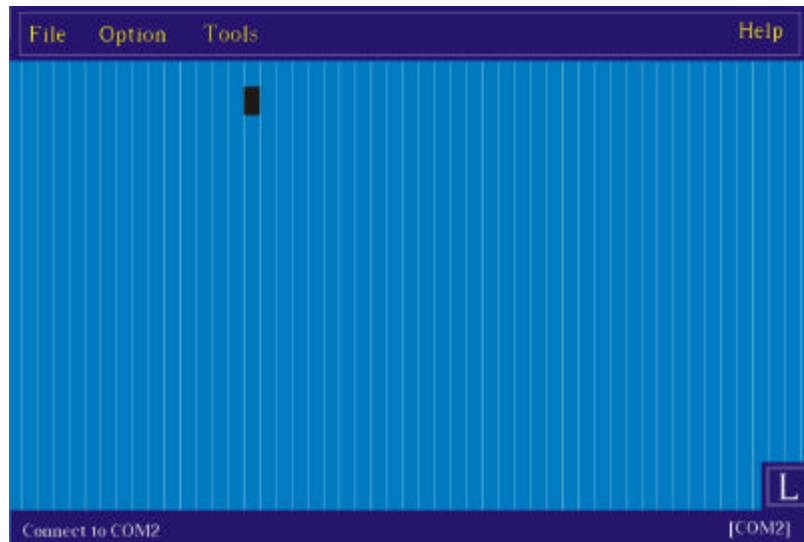
- Calibrating your screen, refer to page 9
- Configuring the mouse mode, refer to page 14 – *Touch Setting*

Using eTurboWare

To open eTurboWare, please do the following:

1. Change onto the directory where eTurboWare application software located.
2. Type “tpdiag.exe” and press Enter.

The Diagnostics Utility screen will be shown as the following. There are four main items that you have to pay attention – File, Option, Tools and Help.

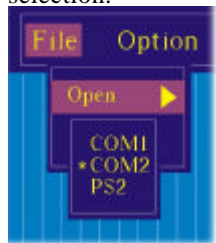


File Menu

After you open the eTurboWare, the first thing that you have to do is to select the correct communication port for your touch panel. That is, to find the interface for communication such as COM Port, PS/2 port setting for your sensor.



Move the mouse cursor onto the File menu. There are two menu items that you can find, Open and Exit. For choosing the communication port, please select Open menu item. Three options of communication ports provided here for your selection.



Choose the one that connected to the touch panel. The one that you select will be marked with a star sign.

Calibrating Your Screen

To make the touch panel to locate the correct position for each touch, you have to do calibration after the hardware and software installation are finished.

When should you calibrate the screen:

- The first time you run eTurboWare, you have to do 2 points calibration first.
- Each time you change the video resolution (for example 640x480 or 800x600) or video mode of your monitor.
- Any time you change the size of the video image by adjusting the horizontal and vertical controls on your monitor.
- If the cursor does not follow the movement of your finger (pointing device), or cannot reach the edges of the screen.

2-Point Calibration

To have a 2-point calibration, please

1. Select **Panel Mapping** menu item from the Option menu.



2. A screen with two calibration points appears.



3. Touch on the blinking one with your finger or pointing device for a while. If it is OK, the point will change into a yellow cross and keep steadily.

.. Note: The calibration screen will exit automatically if you do not touch on the blinking point for calibration after a short time.

4. Now, finish the second point calibration.
5. You have done the panel mapping.

5-Point Calibration

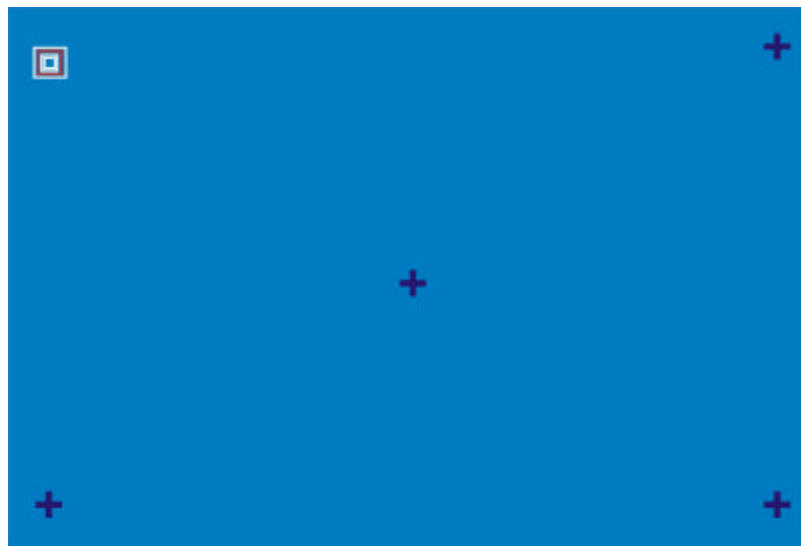
To have a simple mapping with linearization compensation, execute 5-point calibration to get the result. When you select this function, 5 points display on your screen. Please touch on it in a while until it changed color into green (means calibration of that point is OK) and then release your finger or pointing device.

To have a 5-point calibration, please

1. Select **5pt Calibration** menu item from the Tools menu.



2. The screen with 5 points for your calibration appears. The top-left point blinks to push you to do the calibration.



3. Touch on the blinking one with your finger or pointing device for a while. If it is OK, the point will change into a yellow cross and keep steadily.

⋯ Note: The calibration screen will exit automatically if you do not touch on the blinking point for calibration after a short time.

4. Follow the instruction on the screen to touch every point..
5. When you finish these steps, you have done the panel mapping.

25-Point Calibration

This command defines the X and Y axis position for a touch. When you select this command, 25 points with black background will display on your system

screen. The point to the left-top side will blink to ask you to do the calibration. Please touch on it by your finger or any point device in a while until it changed from blinking into steady cross. For calibration, you have to touch 25 points one by one.

.. Note: As this command is used for compensation if the touch panel got some problem of bad linear, it is not recommended to invoke it.

For 25-point calibration was done by factory as a default setting, in general, you do not need to execute this action again. Yet, if you really want to do, please follow the steps below:

1. Select **25pt Linearization** menu item from the Tools menu.



2. The screen with 25 points for your calibration appears.



3. Touch on the blinking one with your finger or pointing device for a while. If it is OK, the point will change into a yellow cross and keep steadily.

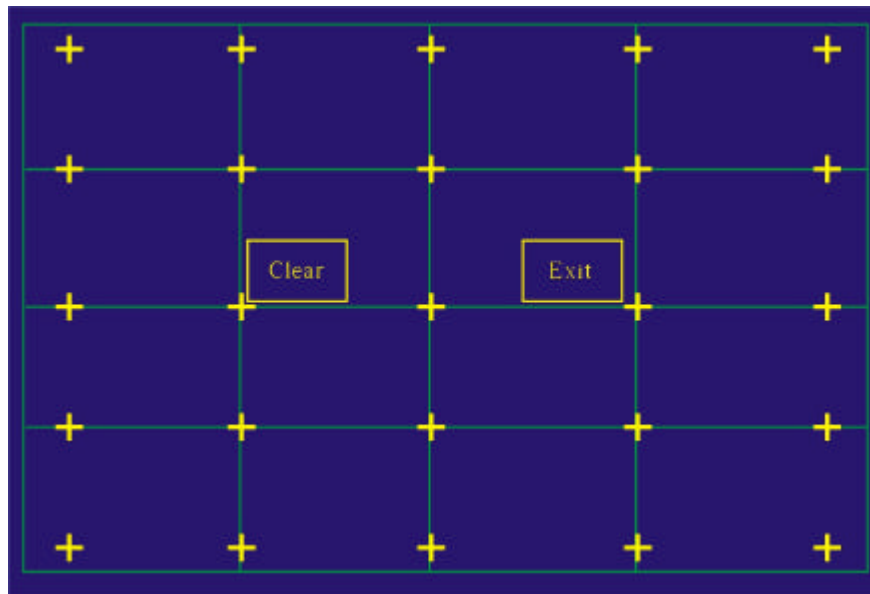
Note: The calibration screen will exit automatically if you do not touch on the blinking point for calibration after a short time.

4. Follow the instruction on the screen to touch every point.
5. When you finish these steps, you have done the panel mapping.

Draw Test Window

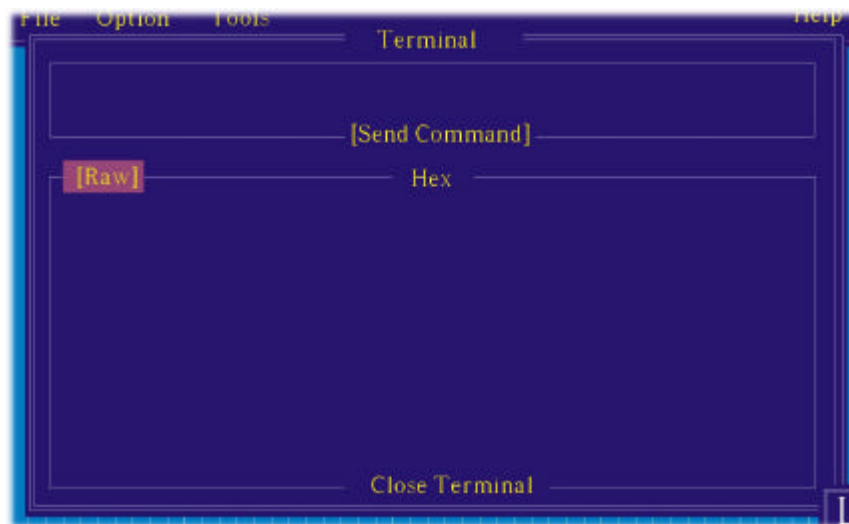
The Draw Test Window is provided for you to do simple test of finger touch. You can draw lines with your finger or any pointing device.

To clear the trail of your drawing test, click **Clear** to clean it. To exit this window, please press **Exit** button on the screen.



Terminal Window

This tool allows you to type firmware command on the command line. The result will be shown on the below terminal message window.

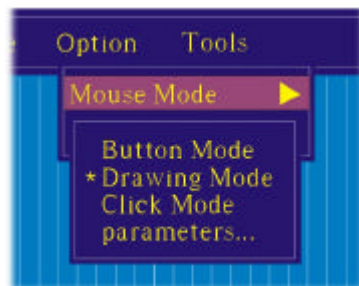


Touch Setting

You might want to configure some settings after installing eTurboWare. Use the Option menu to set touch setting whenever you want.

Mouse Mode

You can choose a touch mode for your necessity. For choose the proper touch mode, please open the Option menu, and you will find three selections are provided here.



Button Mode

In Button mode, touching the screen is equal to pressing and/or releasing the mouse button.

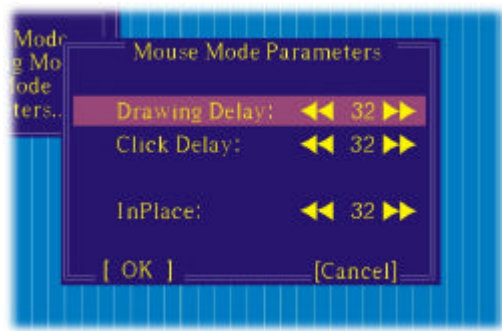
Drawing Mode

Drawing mode is useful for draw and graphics applications. In Drawing mode, a touch is equal to pressing and holding down the mouse button. Lifting off your touch is the same as releasing the mouse button.

Click Mode

It is useful for general-purpose desktop applications. In this mode, a touch positions the cursor much like a mouse. Holding the touch is equal to pressing and holding the mouse button. Lifting the touch off is equal to releasing the mouse button.

Mouse Mode Parameter



Drawing Delay - Defines the time that you must touch the screen for your system to interpret your actions as a click. Adjust it to the right to set the range for each touch be larger; adjust it to the left to set the range for each touch be smaller.

Click Delay- Defines how quickly you must touch the screen for your system to interpret your actions as a click. Adjust it to the right to set the speed for each touch be slower; adjust it to the left to set the speed for each touch be faster.

InPlace - The *Inplace* defines the area (range) in which you must touch the screen for your system to interpret your actions as a click.

eTurboWare Mouse Icon

A button to the right-bottom of the mainscreen is used to switch between left and right button function for a touch.



This button can apply the right mouse button function for a touch. The limitation is that it can be used just once. If you want to apply the function for next use, you must press this button again.

On-Line Help

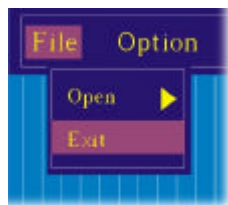
eTurboWare will offer an on-line help for your reference whenever you want to

know the detailed information about each commands in the future. Now current version information for eTurboWare will be shown when you choose **About** menu item from Help menu



Exiting the eTurboWare

When you finish all the setting adjustments, you can exit the main screen of eTurboWare. Choose **Exit** from the File menu to make all the settings take effect.



3. *Troubleshooting*

This chapter will provide you some notice and specific information for your reference.

Important Notice

- If you have to do a 25-point calibration, please do the 5-point calibration first and clear the hardware information recorded in the controller. To do this, click the 25Parameter tag – choose “Clean” – click “Download” and quit.
- If you have rotated the sensor for some reason, before using it, please execute 2-point calibration. The 2-point calibration will not affect 5-point and 25-point calibration unless re-calibrated.
- For LCD video rotation, it is not necessary to do re-calibrate with 2-point. The LCD video coordinate is separate from touch coordinate.
- The driver/utility v1.05 is compatible with firmware 1.00 and later. Before you install a new driver /utility to your system, please check the controller firmware's version. Choose About Touch button from the Controller List dialog box to get the firmware and driver version information.
- The touch panel provides less 1.5 accuracy fail message. The 1.5% length of sensor active area and 1.5% wide of sensor active area offset is acceptable. However, the calibration accuracy will affect this result and sensor size. Besides, the larger offset distance will appear.

